

# BETON TROWEL

CONCRETE FINISHING  
& COMPACTION



EDITION  
2023



CE

# BETON TROWEL

**BETON TROWEL BV** takes pleasure in introducing our extensive range of concrete finishing and compaction equipment. We make no compromise on quality using high grade materials combined with precision engineered parts to ensure that your investment in our equipment brings you a trouble free working life and the maximum return on your capital.

Our line of concrete finishing equipment is the most extensive in Europe and covers the majority of the requirements of the concrete flooring contractor and rental organisations.

Head quartered in Belgium we are located close to the shipping port of Antwerp for prompt and easy shipping worldwide. Our highly experienced export admin team will take care of all aspects of shipping and documentation.

This product guide introduces you to our range. For more detailed information and specifications and working videos please visit our website [www.betontrowel.com](http://www.betontrowel.com)

# INDEX

BT PORTA TROWELS .....	04
BT EDGER TROWELS .....	05
BT POWER TROWELS .....	07
BT RIDE ON POWER TROWELS .....	10
BT TROWEL BLADES & FLOAT PANS .....	13
BT CONCRETE (FINISHING) TOOLS .....	16
BT CONCRETE LEVELLING & SCREEDING .....	24
BT CONCRETE & ASPHALT SAWS .....	26
BT CONCRETE SCARIFIERS .....	28
BT SUBMERSIBLE PUMP .....	29
BT CONCRETE VIBRATORS .....	29
BT EMISSION CONTROL .....	35
BT POWER .....	35
BT COMPACTION PLATES .....	36
BT COMPACTION RAMMERS .....	38
BT COMPACTION ROLLER .....	39
BT SITE LIGHTING .....	40

# BT PORTA TROWELS

## BTPT75 PORTA TROWEL



## THE BT LIGHT WEIGHT SOLUTION FOR CONCRETE FINISHING

- Improved operator comfort and safety
- To be used for initial floating of the wet concrete right through to final finishing
- Blade pitch function up to 25 degrees
- Variable length pole/stick (Snap handles sold separately)
- Controlled from up to 6m away
- Easy Control directional steering function allows for precise movement of the PortaTrowel by twisting the handle from side to side
- Operating weight : 22 kg
- Honda GX35 engine
- Robust, durable and fully sealed inline planetary gearbox
- Hassle free operation
- Low engine emissions

### TECHNICAL INFO

DIAMETER	75cm
ENGINE OPTIONS	Honda GX35 1.5 HP
DIMENSIONS	775 × 775 × 480 mm
WEIGHT	22 KG
HANDLE	Clip Together (max 3 × 1800 mm)
<b>BLADE &amp; FLOAT PAN OPTIONS:</b>	
COMBINATION BLADES	YES*
FLOAT PAN	YES*

\* Special types

# BT EDGER TROWELS

## BT60 & BT75 EDGER TROWELS

- BT Edger Trowels take the hard work away from finishing close to walls and columns
- Rotating ring with rubber protected edge allows the machine to run along a wall without damage
- Blades and float pan sit directly under the guard ring to finish tight up against the wall
- Folding handle for easy storage and transportation
- Precision machined spider assembly for low wear and long life
- Mechanical Stop system
- Optional Hoist Hook



### TECHNICAL INFO

DIAMETER	60 cm	75 cm
ENGINE OPTIONS	Honda GX160, 5.5 HP	Honda GX160, 5.5 HP
	BTP200, 5.7 HP	BTP200, 5.7 HP
	Electric 230v 50 Hz, 1.1 kw	Electric 230v 50 Hz, 2.2 kw
DIMENSIONS	1490 x 600 x 910 mm	1610 x 760 x 960 mm
WEIGHT	53 kg	72 kg
FOLDING HANDLE	YES	YES
BLADE & FLOAT PAN OPTIONS:		
FINISH BLADES	YES	YES
PLASTIC BLADES	YES	YES
FLOAT PANS	YES	YES

# BT EDGER TROWELS

## BT60B & BT75BE BATTERY POWERED TROWELS

## BETTER CO2 FOOTPRINT FOR YOUR FLOORING PROJECT

- Battery version powered by Lithium high quality battery
- Zero emission for increased safety and health control
- Noise level reduction (max 79 dB(A))
- Easy change of batteries quick connect
- Light weight design (similar to gasoline models)
- CE approved
- Folding handle for easy storage and transportation
- Double Mechanical stop system
- Equipped with special hoist hook

**BT60B**



**BT75BE**



### TECHNICAL INFO

	60 cm	75cm
DIAMETER	60 cm	75cm
ENGINE POWER	1,2 kW	1,7 kW
BATTERY TYPE	32020 (25.9V)	32020 (25.9V)
BATTERY LIFE AT USAGE	75-180 min	60-180 min
BATTERY CHARGING TIME	Max. 3 Hrs	Max. 3 Hrs
WEIGHT	68 kg	80 kg
<b>BLADE &amp; FLOAT PAN OPTIONS:</b>		
FINISH BLADES	YES	YES
PLASTIC BLADES	YES	YES
FLOAT PAN	YES	YES

# BT POWER TROWELS

- Contoured handle for maximum comfort and machine control
- Tri tube laterally welded handle for strength and to protect control cables
- Dual stop safety systems. Manual and centrifugal
- Chromed guard ring and handle for easy cleaning
- Precision machined solid bronze gear and hardened ground worm gear for long life
- Impact resistant aluminium gearbox
- Tapered main shaft for perfect fit to precision machined tolerance fit to spider plate and trowel arms to ensure minimum wear and long service life
- Hoist hook fitted as standard
- Folding handle option
- 36 month warranty on Gearbox and Spider

**BT75H**



**BT90HFH**



**BT90H**



**BT120H**





# BT POWER TROWELS

## FEATURES

### DEAD MAN SWITCH



### CENTRIFUGAL SAFETY SWITCH



### BT90 DOLLEY WHEELS (OPTIONAL)



### PRECISION MACHINED SPIDER



## TECHNICAL INFO

DIAMETER	75 cm	90 cm	120 cm
ENGINE OPTIONS	Honda GX160	Honda GX160, 270	Honda GX270
	BTP200	BTP200	Honda GX390
	Yanmar Diesel, 230v Electric, 50 Hz	Yanmar Diesel, 230v Electric, 50 Hz	
FOLDING HANDLE	OPTION	OPTION	NO
WEIGHT	70 kg	78 kg	118 kg
<b>BLADE &amp; FLOAT PAN OPTIONS:</b>			
FINISH BLADES	YES	YES	YES
COMBINATION BLADES	NO	YES	YES
WIDE FINISH BLADES	NO	YES	YES
FLOAT SHOES	YES	YES	YES
PLASTIC BLADES	NO	YES	YES
FLOAT PAN	YES	YES	YES
GRINDING BLOCKS	NO	YES	YES



# BT POWER TROWELS

## BATTERY DRIVE KIT FOR WALK-BEHIND TROWELS AND EDGERS

- Interchangeable with fuel engine
- No exhaust gases, no fuel and no cords
- Zero-Emission
- Low noise production
- Quickly changeable Clover battery
- Battery 100% charged <1hour
- Quick start/stop
- Ergonomic throttle
- High power air-cooled 3kW motor
- Latest generation Lithium LiFePo4 Battery
- State of charge (SOC) indicator in each battery
- Nonstop power floating with 35A fast charger (optional)
- 2 engine models available to mount on BT60H, BT75HE, BT75H and BT90H
- Kit includes drive unit + battery + charger 5A

BT90H



CM4860E  
WB MODEL



CC4860E COMPACT  
EDGER MODEL



### TECHNICAL INFO

TYPE	CC4860e Compact	CM4860e
ENGINE POWER	3kW	3kW
BATTERY TYPE	LiFePO4	LiFePO4
BATTERY LIFE AT USAGE	50-120 min	50-120 min
BATTERY CHARGING TIME	47 min with 35A charger	47 min with 35A charger
APPLICABLE	BT60H, BT75HE	BT75H, BT90H

# BT RIDE ON POWER TROWELS

## BT LOW RIDERS

**BT750L**



- The range offered is the most comprehensive on the market with machine choices for the most demanding of flooring professionals
- Ergonomic controls enhance productivity and reduce operator fatigue
- Foot operated throttle and dead man safety control
- Simple but strong mechanical drive train for easy and cost effective maintenance
- Precision machined gearbox and spider assemblies for long trouble free life and fine finishing tolerance
- Spray system, adjustable seat, 4 x LED lights, engine hour meter all fitted as standard with exception of BT750 rider model
- Crane lifting points
- Optional two wheel transporter for site use and to ease blade changes
- Forklift pockets fitted to all BT120H riders
- 2 Year Gearbox Warranty. The robust gearboxes have proven their reliability for over 20 years.
- Optional hydraulic steering offers quick response with minimal operator effort

**BT900L**



**BT900LH**



# BT RIDE ON POWER TROWELS

## BT LOW RIDERS

BT1200L



RIDER SITE  
TRANSPORTER



## BT HIGH RIDERS

BT900H



BT900HH



# BT RIDE ON POWER TROWELS

## BT HIGH RIDERS

BT1200H



BT1200HH



## TECHNICAL INFO

MODELS	BT750L	BT900L	BT900LO	BT900LH	BT900H	BT900HH	BT1200L	BT1200H	BT1200HH	BT1200HHD
<b>SPECS</b>	BT750-2PFH13	BT900-2PFH24	BT900-2OLH24 (*)	BT900H-2PFH24	BT900-HPFH24.1	BT900H-HPFH24.1	BT120L-2/5/PFV35.1	BT120-2/5/PFV35.1	BT120H-2/5/PFV37	BT120HD-2/5/44Y (**)
<b>ENGINES</b>	GX390	GX690	GX690	GX690	GX690	GX690	VANGUARD 35	VANGUARD 35	VANGUARD 37	Yanmar 44 Diesel
<b>DIMS CM</b>	165 x 81	194 x 99	194 x 99	194 x 99	195 x 100	195 x 100	254X127	254X127	254 x 127	254X127
<b>WEIGHT KG</b>	205	275	275	325	315	370	425	480	525	705
<b>BLADES</b>	8	8	8	8	8	8	10	10	10	10
<b>FLOAT PANS</b>	Yes	Yes	NO	Yes	Yes	Yes	Yes	Yes	YES	YES
<b>FINISH</b>	6 x 10	6 x 14	6 x 14	6 x 14	6 x 14	6 x 14	6 x 18	6 x 18	6 x 18	6 x 18
<b>COMBINATION</b>	NO	8 x 14	8 x 14	8 x 14	8 x 14	8 x 14	8 x 18	8 x 18	8 x 18	8 x 18
<b>WIDE FINISH</b>	NO	8 x 14	8 x 14	8 x 14	8 x 14	8 x 14	8 x 18	8 x 18	8 x 18	8 x 18
<b>FLOAT SHOES</b>	NO	10 x 14	10 x 14	10 x 14	10 x 14	10 x 14	10 x 18	10 x 18	10 x 18	10 x 18
<b>PLASTIC BLADES</b>	NO	Yes	Yes	Yes	Yes	Yes	Yes	Yes	YES	YES
<b>STEERING</b>	MANUAL	MANUAL	MANUAL	HYDRAULIC	MANUAL	HYDRAULIC	MANUAL	MANUAL	HYDRAULIC	HYDRAULIC

(\*) Overlapping Model

(\*\*) Available in 2023

# BT TROWEL BLADES

## BT TROWEL BLADES

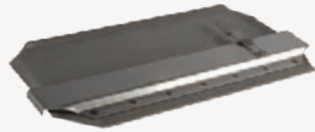
### FINISH BLADES

ITEM N°	DESCRIPTION
F75416D	6" X 10" ( 75) BT750-2FP RIDER
F75416B	6" X 10" ( 75) BT75 - BARTELL B430 & BARIKELL 75-MK8
F90416	6" X 14" (90) STANDARD 1.6mm
F90416MK10	6" X 14" (90) BARIKELL MK8 WITH 10MM BOLTS
F90419	6" X 14" (90) LONG LIFE 1.9mm
F120416	6" X 18" (120) 1.6MM
F120416MK10	6" X 18" (120) BARIKELL MK8 WITH 10MM BOLTS
F120419	6" X 18" (120) LONG LIFE 1.9mm
F120516	6" X 18" (120) 1.6MM SET OF 5 BLADES
F120419LB	6" X 18" (120) 1.9MM HEAVY DUTY BLADE BAR BARTELL TS100, HTX RIDERS



### FLOAT SHOES

ITEM N°	DESCRIPTION
FS7543	10 X 11"
FS9043	10 X 14" (90)
FS12043	10 X 18" (120)



### EDGER BLADES

ITEM N°	DESCRIPTION
F60412	4 3/4" X 9" (60)
F75416M	4 3/4" X 11" (75)
F75416PT	4 3/4" X 11" (PT75)



### COMBINATION BLADES

ITEM N°	DESCRIPTION
C90419	8 X 14" (90)
C120419	8" X 18" (120)
C120519	8" X 18" (120) SET OF 5 BLADES
C90419MK10	8" X 14" (90) BARIKELL MK8 WITH 10MM BOLTS
C120419MK10	8" X 18" (120) BARIKELL MK8 WITH 10MM BOLTS
C90419NC	8" X 14" (90) NORTON CLIPPER



### WIDE FINISH BLADES

ITEM N°	DESCRIPTION
WF90419	8 X 14" (90) REVERSIBLE
WF120419	8 X 18" (120) REVERSIBLE
WF120519	8 X 18" (120) BLADE SET OF 5 BLADES



# BT TROWEL BLADES

## BT TROWEL BLADES

### DYNAPAC AND MULTIQUIP EDGER BLADES

ITEM N°	DESCRIPTION
BT366693	BG21 & MQ24 BLADE MULTIQUIP 24" TROWEL & DYNAPAC, ATLAS COPCO & HUSQVARNA 60CM



### SPECIAL BLADES DYNAPAC FINISH BLADES

ITEM N°	DESCRIPTION
BT970990	BG33 CHANNEL MOUNT
BT702752	BG39 CHANNEL MOUNT



### TREMIX SERIES BLADES

ITEM N°	DESCRIPTION
BT32337	G900 TREMIX 902,903 COMBI FINISH BLADE CHANNEL
BT22047	G700 TREMIX G700 FINISH BLADE CHANNEL MOUNT



### POLYPROPYLENE PLASTIC BLADES

ITEM N°	DESCRIPTION
F60412P	4 3/4" X 9" (60) ▲
F75416MP	4 3/4" X 11" (75) ▲
F90416P	8" X 14" (90) ▲
F120416P	8" X 18" (120) ▲
F90416PR	6" X 14" (90) *
F120416PR	6" X 18" (120) *



▲ Standard

### ADJUSTABLE UNIVERSAL BLADES

ITEM N°	DESCRIPTION
C90419A	8" x 14" ADJUSTABEL UNIVERSAL BLADES



\* With steel back for riders

# BT TROWEL BLADES

## BT FLOAT PANS

### FLOAT PANS

ITEM N°	DESCRIPTION
FP9404P	90cm (36") FLOAT PAN 4 BRACKETS PAINTED
FP9408NP	94cm FLOAT PAN 8 BRACKETS NOT PAINTED
FP9408P	94cm FLOAT PAN 8 BRACKETS PAINTED
FP9808NP	96,5cm FLOAT PAN 8 BRACKETS NOT PAINTED (BARIKELL)
FP9808NPB	98cm FLOAT PAN 8 BRACKETS B-MAC
FP11708P	117cm FLOAT PAN 8 BRACKETS PAINTED
FP11708NP	117cm FLOAT PAN 8 BRACKETS NOT PAINTED
FP11705B/NP	117cm FLOAT PAN STANDARD BRACKETS
FP1170/5P	117cm FLOAT PAN PIN TYPE BRACKETS 5 BLADE PAINTED
FP1170/5NP	117cm FLOAT PAN PIN TYPE BRACKETS 5 BLADE NOT PAINTED
FP1220/5NP	120cm FLOAT PAN 5 BRACKETS WACKER
FP12008NPB	120cm FLOAT PAN 8 BRACKETS FOR B-MAC
FP12308NP	123cm FLOAT PAN 8 BRACKETS WACKER
FP1533NP	153cm FLOAT PAN 6 BRACKETS NOT PAINTED (STX)



### FLOAT PANS

ITEM N°	DESCRIPTION
FP602	60cm (24") GALVANISED FLOAT PAN - 2 BRACKETS
FP604	60cm (24") GALVANISED FLOAT PAN - 4 BRACKETS
FP604NG	60cm (24") NON GALVANISED FLOAT PAN W/ 45° EDGE
FP604PO	60cm (24") FLOAT PAN 45Å ATLAS COPCO/ HUSQVARNA BG245
FP7504	75cm (30") GALVANISED FLOAT PAN 90° EDGE
FP7504NG	75cm (30") NON GALVANISED FLOAT PAN 90° EDGE
FP7508	75cm (30") FLOAT PAN 8 BRACKETS 90° BT750 RIDER
FP7754	75cm (30") FLOAT PAN 4 BRACKETS 45° EDGE NOT PAINTED
FP7754PO	75cm (30") FLOAT PAN 4 BRACKETS 45° PAINTED
FP7758	75cm (30") FLOAT PAN 8 BRACKETS 45° EDGE NOT PAINTED



## TOPPING MATERIAL SPREADER

- Handle folds down for ease of transportation
- Fold down stand for ease of material loading
- Wheels drive axle blades
- Each wheel is independent allowing easy turning in tight spaces
- Exact material discharge per square metre
- Discharge rate 1 to 6KG
- Max hopper load 100KG
- Dimensions: L 1000 mm x W 450 mm x H 500 mm (not including wheels)





# BT CONCRETE (FINISHING) TOOLS

## BT FLATWORK TOOLS

### LIGHTWEIGHT BULLFLOAT

ITEM N°	DESCRIPTION
BT350083	900mm X 200mm COMPLETE*
BT350084	1200mm X 200mm COMPLETE*
BT350085	1500mm X 200mm COMPLETE*
BT350086	1800mm X 200mm COMPLETE*

\* Complete with pitch control head & 3x 1,8M extension handles



### LIGHTWEIGHT BULLFLOAT WITH BROOM

ITEM N°	DESCRIPTION
BT350072	900mm X 200mm BROOM KIT COMPLETE *
BT350073	1200mm X 200mm BROOM KIT COMPLETE *
BT350074	1500mm X 200mm BROOM KIT COMPLETE *

\* Complete with pitch control head & 3x 1,8M extension handles + broom



### BIG BLUE FLOAT

ITEM N°	DESCRIPTION
BT111990C	600mm X 300mm*
BT111991C	900mm X 300mm*
BT111992C	1200mm X 300mm*
BT111993C	1500mm X 300mm*
BT111994C	1800mm X 300mm*
BT111995C	2400mm X 300mm*

\* Complete with pitch control head & 3x 1,8M extension handles



### FRESNO FLOAT

ITEM N°	DESCRIPTION
BT750055	900mm X 120mm COMPLETE*
BT750056	1200mm X 120mm COMPLETE*
BT750057	1500mm X 120mm COMPLETE*

\* Complete with pitch control head & 3x 1,8M extension handles + broom



# BT CONCRETE (FINISHING) TOOLS

## BT FLATWORK TOOLS

### MESH TWIN ROLLER TAMP

ITEM N°	DESCRIPTION
BT36RTC	900mm DOUBLE ROLLER TAMP*
BT48RTC	1200mm DOUBLE ROLLER TAMP*

\* Complete with 3x 1.8M EXTENSION SNAP HANDLES



### AUSSIE SCREEDS

ITEM N°	DESCRIPTION
BT1500AS	1.5M AUSSIE SCREED WITH CLAMP HANDLE & LEVEL BUBBLE
BT3000AS	3M AUSSIE SCREED WITH CLAMP HANDLE & LEVEL BUBBLE
BT3600AS	3.6M AUSSIE SCREED WITH CLAMP HANDLE & LEVEL BUBBLE
BT4200AS	4.2M AUSSIE SCREED WITH CLAMP HANDLE & LEVEL BUBBLE



### TWO HANDED TAMPER

ITEM N°	DESCRIPTION
BT16422	DIAMOND PATTERN TWO HANDED HAND TAMPER



### HAND LEVELLING SCREEDS

ITEM N°	DESCRIPTION
BTAL20	2M ALUMINUM SCREED WITH TWO HAND GRIPS
BTAL25	2.5M ALUMINUM SCREED WITH TWO HAND GRIPS
BTAL30	3M ALUMINUM SCREED WITH TWO HAND GRIPS
BTAL45	4.5M ALUMINUM SCREED WITH TWO HAND GRIPS
BTAL50	5M ALUMINUM SCREED WITH TWO HAND GRIPS



# BT CONCRETE (FINISHING) TOOLS

## BT FLATWORK TOOLS

### CHANNEL RADIUS FLOAT

ITEM N°	DESCRIPTION
BT101034C	2450mm X 150mm*
BT101035C	3000mm X 150mm*▲

\* Complete with pitch control head & 3x 1,8M extension handles  
▲ With outrigger kit



### HEAVY DUTY BUMPCUTTER

ITEM N°	DESCRIPTION
BT101026C	3000mm X 50mm X 120mm*
BT101027C	3650mm X 50mm X 120mm*
BT101028C	5000mm X 50mm X 120mm*

\* Complete with pitch control head & 3x 1,8M extension handles. Outrigger kit



### HEAVY DUTY CHECK ROD

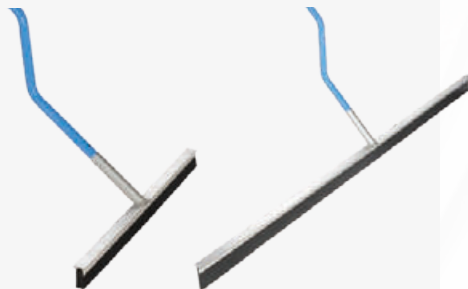
ITEM N°	DESCRIPTION
BT101130C	3000mm X 50mm X 120mm*
BT101129C	3650mm X 50mm X 120mm*
BT101128C	5000mm X 50mm X 120mm*

\* Complete with pitch control head & 3x 1,8M extension handles. Outrigger kit



### CONCRETE SQUEEGIE

ITEM N°	DESCRIPTION
BT066060C	2000mm RUBBER SQUEEGIE COMPLETE WITH ERGONOMIC HANDLE
BT066061C	750mm RUBBER SQUEEGIE COMPLETE WITH ERGONOMIC HANDLE



# BT CONCRETE (FINISHING) TOOLS

## BT FLATWORK TOOLS

### TEXAS PLACERS

ITEM N°	DESCRIPTION
BT009989C	TEXAS PLACER, ALUMINUM HEAD, WOOD HANDLE
BT009991	TEXAS PLACER, ALUMINUM HEAD, ALUMINUM HANDLE WITH BRACE BAR
BT009991H	TEXAS PLACER, ALUMINIUM TEXAS PLACER WITH HOOK
BT009992C	TEXAS PLACER, STEEL HEAD, WOOD HANDLE
BT009992TC	TEXAS PLACER, STEEL WITH SERRATED EDGE, WOOD HANDLE



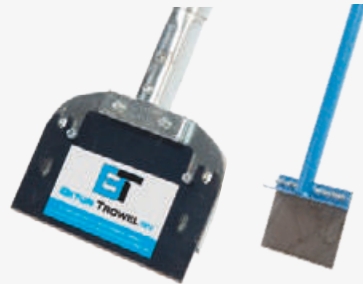
### CONCRETE BRUSHES

ITEM N°	DESCRIPTION
BTCC256	900 CONCRETE FINISHING BROOM (Handle not included)
BTCC429	FIBER GLASS EXTENSION HANDLE 6M



### FLOOR SCRAPERS

ITEM N°	DESCRIPTION
BT229FS	229 X 114mm CARBON STEEL W. STEEL HANDLE
BT2105	SLAM SCRAPER



### WIRE TINE

ITEM N°	DESCRIPTION
BT14852	600MM METAL BROOM ¾" SPACING (Handle not included)
BT14862	1200MM METAL BROOM ¾" SPACING (Handle not included)

Use with Extension handle BTCC429



# BT CONCRETE (FINISHING) TOOLS

## BT MASTER FINISHER HAND TOOLS

- BT hand trowels are made from quality spring carbon steel to retain shape
- With comfort soft grip
- Riveted to the shank for strength
- Ground edges: no trowel breaking

### SQUARE END TROWELS

6 pcs/box

ITEM N°	DESCRIPTION
BT279S	279 X 120mm
BT356S	356 X 100mm
BT406S	406 X 100mm
BT457S	457 X 120mm
BT508S	508 X 120mm



### ROUNDED POOL TROWELS

6 pcs/box

ITEM N°	DESCRIPTION
BT351FR	356 X 100mm
BT406FR	406 X 100mm
BT457FR	457 X 100mm
BT510FR	510 X 120mm
BT559FR	559 X 120mm



### ROUND / SQUARE END TROWELS

6 pcs/box

ITEM N°	DESCRIPTION
BT351RF	356 X 100mm
BT406RF	406 X 100mm
BT508RF	508 X 120mm



### SQUARE BEVEL END MAGNESIUM HAND FLOAT

ITEM N°	DESCRIPTION
BTMF16	16 X 3.15" 406 X 80mm
BTMF20	20 X 3.15" 508 X 80mm
BTMF30	30 X 3.15" 762 X 80mm



### POINTED TROWELS

6 pcs/box

ITEM N°	DESCRIPTION
BT406P	401 X 115mm
BT457P	457 X 115mm
BT508P	508 X 115mm
BT559P	559 X 120mm



# BT CONCRETE (FINISHING) TOOLS

## BT MASTER FINISHER HAND TOOLS

### SQUARE END FLOAT TROWELS

ITEM N°	DESCRIPTION
BT229ECT	229 X 100mm – economy model



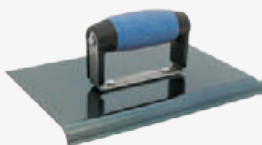
### BRONZE HAND EDGERS

ITEM N°	DESCRIPTION
BT70BE	152 X 70mm 6mm R 16mm LIP



### BLUE STEEL HAND EDGERS

ITEM N°	DESCRIPTION
BT6313HE	152 X 76mm, 10mm R 13mm LIP
BT6413HE	152 X 104mm, 10mm R 13mm LIP
BT6613HE	152 X 152mm, 13mm R 16mm LIP



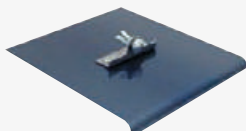
### BRONZE HAND GROOVERS

ITEM N°	DESCRIPTION
BT152BG	152 X 114mm W 13mm D 25mm



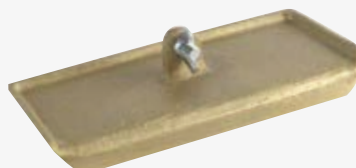
### BLUE STEEL WALKING EDGERS

ITEM N°	DESCRIPTION
BT105WE	229 X 203mm 6mm R 10mm LIP
BT225WE	229X 203mm 19mm R 22MM LIP



### BRONZE WALKING EDGERS\*

ITEM N°	DESCRIPTION
BT152BWE	152 X 102MM 6MM R 16MM LIP



# BT CONCRETE (FINISHING) TOOLS

## BT MASTER FINISHER HAND TOOLS

### STAINLESS STEEL HAND GROOVERS

ITEM N°	DESCRIPTION
BT203SG	203 X 203MM D 19MM R 13 MM



### STAINLESS STEEL HAND EDGERS

ITEM N°	DESCRIPTION
BT254SE	254 X 102MM R 13MM LIP 16 MM



### STAINLESS STEEL WALKING GROOVERS

ITEM N°	DESCRIPTION
BT203WSG	203 X 203MM D 19MM R 13 MM



To be used with adaptor BT45R or BT12328C

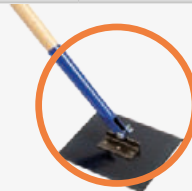
### MINI ROCKER ADAPTOR FOR SNAP HANDLES

ITEM N°	DESCRIPTION
BT45R	CAN BE USED FOR BULLFLOATS AND FRESNO BLADES INSTEAD OF PITCH CONTROL HEAD. SNAPLOCK EXTENSION HANDLES CLIP ON TO IT



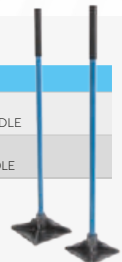
### WOODEN HANDLE ADAPTOR

ITEM N°	DESCRIPTION
BT12328	ADAPTOR ONLY FOR WOODEN HANDLE
BT12328C	WOODEN HANDLE WITH ADAPTOR



### IRON TAMPS

ITEM N°	DESCRIPTION
BT203HTC	8" X 8" 203 X 203MM. CAST IRON HAND TAMP WITH WOODEN HANDLE
BT305HTC	10" X 10" 254 X 254MM. CAST IRON HAND TAMP WITH WOODEN HANDLE





# BT CONCRETE (FINISHING) TOOLS

## BT MASTER FINISHER HAND TOOLS

### PRY BAR

ITEM N°	DESCRIPTION
BT14956	FORM WORK PRY BAR (3 KG)
BT16595	HEAVY DUTY FORM WORK PRY BAR (5 KG)



### CHAIN DRIVE PITCH CONTROL

ITEM N°	DESCRIPTION
BT003301	CHAIN DRIVE PITCH CONTROL



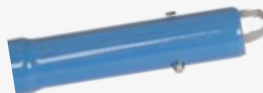
### REBAR BENDERS & CUTTERS

ITEM N°	DESCRIPTION
BT58	REINFORCING BAR CUTTER & BENDER UP TO 15MM



### ALUMINIUM SNAP HANDLE

ITEM N°	DESCRIPTION
BT000055	1800MM X Ø 45MM SNAPLOCK EXTENSION HANDLE



### WORM DRIVE PITCH

ITEM N°	DESCRIPTION
BT003300	WORM DRIVE PITCH



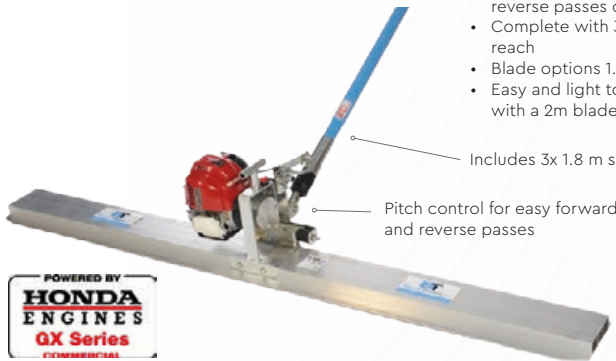
### BULLFLOAT BAG

ITEM N°	DESCRIPTION
BT17302	BULLFLOAT BAG



# BT CONCRETE LEVELLING AND SCREEDING

## BT VTBF BETA VIBRATAMP BULLFLOAT



- For effective levelling without guiderails
- Pushes down aggregates leaving fine surface material for sealing or texturing
- Twist handle blade pitch control for easy forward and reverse passes over the slab
- Complete with 3 x 1.8m snaplock handles for a good reach
- Blade options 1.5m, 2m, 2.5m, 3m
- Easy and light to operate with a weight of just 16KG with a 2m blade.

Includes 3x 1.8 m snap-on handle

Pitch control for easy forward and reverse passes

Blades from hollow section aluminum extrusion



## BT EUROSCREED BTS35H.1



- Fast and efficient way to screed concrete
- Can be used with rail formwork but light enough for free floating over concrete
- Fully adjustable handles for maximum operator comfort and ease of control
- A combination of high frequency vibration and curled back edge of the blade profile helps roll back excessive concrete for a perfect level
- Vibration brings fine material to the surface ready for finishing or texture
- Reliable drive system with clutch for gentle power take up with no flexible shafts to break
- Blades from 1.2m to 4.85m length. Blades interchangeable with other leading make machines

Tilt-up stand keeps engine out of concrete when not in use

Special design, hardened aluminum blade



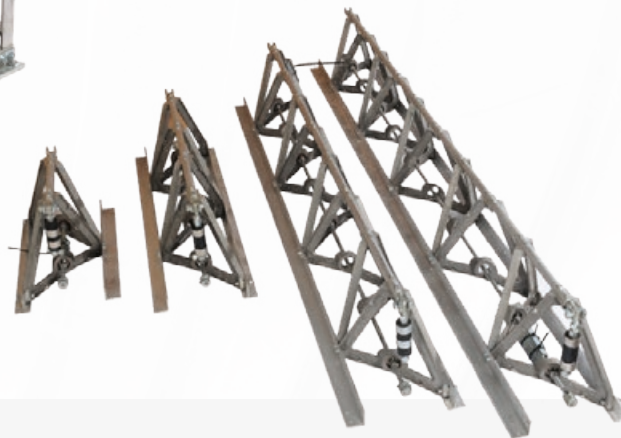
Height adjustable handles for ergonomic operation

# BT CONCRETE LEVELLING AND SCREEDING

## BETON WIDE BAY TRUSS SCREEDS



- Maximum length 15m per engine
- All aluminium construction with unique A frame casting for strength, lightness and rigidity
- Bolted frame struts eliminate weld failures and allow easy replacement of damaged parts without replacing the whole section
- Powerful combination of frequency and amplitude give excellent consolidation and vibration of concrete at depth. Even low slump concrete
- Heavy duty winches also a hydraulic winch option
- Floor accuracy to +/- 3mm across the floor (subject to correct setting up of floor rails)



### TECHNICAL INFO

PART N°	DESCRIPTION
BTSUPMB0010	0,71M (2,5FT) SCREED EXTENSION SECTION
BTSUPMB0020	1,32M (5FT) SCREED EXTENSION SECTION
BTSUPMB0030	2,54M (7,5FT) SCREED EXTENSION SECTION
BTSUPMB0040	SCREED DRIVE KIT POWERED BY HONDA GX270 ENGINE (MOUNTED ON BTSUPMB0030)
BTSUPMB0050	WINCH & HANDLE KIT
BTSUPMB0060	HYDRAULIC WINCH KIT

# BT CONCRETE & ASPHALT SAW

## BTCS350 & BTCS501 CONCRETE & ASPHALT SAW

- The BTCS350 & BTCS501 are compact floor saws developed with a clear focus on your comfort.
- Ideal for small-to mid-sized service and repair jobs
- Adjustable handle provides a closer and more comfortable position to the cutting side for easier alignment and straighter cuts.
- Extendable right rear wheel for increased stability.
- Low vibrations. Engine and blade shaft mounting system increases comfort and gives excellent cutting performance.
- Clear depth indicator

BTCS350

NEW



BTCS501



### TECHNICAL INFO

MODEL	BTCS350	BTCS501
ENGINE	Honda GX270 9 HP	Honda GX390 13 HP
WEIGHT	69 kg	160 kg
MAX. CUTTING DEPT	120 mm	185 mm
MX. BLADE DIAMETER	350 mm	500 mm
WATER TANK CAPACITY	15 l	18 l

# BT CONCRETE & ASPHALT SAW

## BTCS500 CONCRETE & ASPHALT SAW

### BTCS500

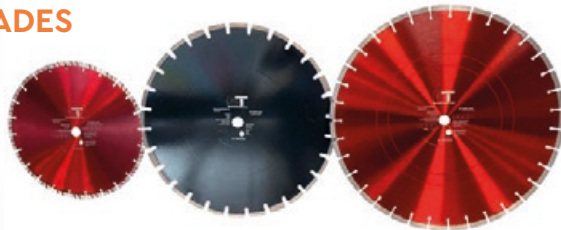


- The BTCS500 is a robustly constructed powerful saw for all types of repair work.
- Water tank is carefully positioned to move center of gravity over the blade when cutting
- Recessed rear wheels making a cut along an open trench simple
- Rigid front pointer to assist straight accurate cut

### TECHNICAL INFO

MODEL	BTCS500
ENGINE	Honda GX390 13 HP
WEIGHT	200 kg
MAX. CUTTING DEPT	195 mm
MX. BLADE DIAMETER	500 mm
WATER TANK CAPACITY	40 l

## DIAMOND SAW BLADES



### TECHNICAL INFO

ITEM N°	Diameter (mm)	Use	No of Segments	Bore Hole (mm)
BTDB350C	350	Concrete	24	25.4/20
BTDB350CA	350	Green Concrete/Asphalt	21	25.4/20
BTDB400C	400	Concrete	28	25.4/20
BTDB450A	450	Asphalt	26	25.4
BTDB500C	500	Concrete	34	25.4

# BT CONCRETE SCARIFIERS

## BTSP10 CONCRETE SCARIFIER

- 200mm cutting width
- Finger tip cutter height control
- Engine deck anti vibration isolated for longer engine life
- 60KG weight for effective scarifying
- Tungstun carbide cutters fitted as standard
- Heavy duty cage with strong centre support
- Fast efficient cutter cage changes
- Honda GX160, BTP200 petrol engines and 2.2kw, 230v, 50Hz electric motor



BTSP10H

BTSP10H



BTSP10E

BTSP10E

### TECHNICAL INFO

MODEL	BTSP10H	BTSP10E
CUTTING WIDTH	200 mm	200 mm
DIMENSIONS	950 x 420 x 960 mm	950 x 420 x 960 mm
WEIGHT	61 kg	69 kg
ENGINE	HONDA GX160, 5.5kW	1.5 kW Electrical Motor

# BT SUBMERSIBLE PUMP

## BT BTSP75 SUBMERSIBLE PUMP

- Fast dewatering at up to 75 m<sup>3</sup> of fluid per hour
- 10m layflat delivery hose with quick release firehose type coupling
- 6m flexible drive shaft with Dynapac-type twin claw coupling
- Petrol and diesel power options



# BT CONCRETE VIBRATORS

## BT45H PORT-A-VIBE

THE PORT-A-VIBE PROVIDES AN EASY SOLUTION FOR VIBRATING CONCRETE FLOORS AND FOUNDATION FOOTINGS. BEING TOTALLY SELF CONTAINED, THERE ARE NO CABLES OR LONG FLEXIBLE SHAFTS TO DRAG THROUGH THE CONCRETE.

- Reliable Honda GX35 4 stroke petrol engine
- Well-balanced unit with a carry strap for ease of operation
- Good balance of amplitude and frequency for efficient compaction of the concrete and elimination of air voids

**Head diameter:** 45mm  
**Frequency:** 9000 vpm  
**Amplitude:** 2.8mm  
**Weight:** 11kg  
**Power:** 1.1 kw





# BT CONCRETE VIBRATORS

## BTROTOPOKA INTERNAL PENDULUM FLEXIBLE DRIVE VIBRATORS

- Square frame protects engine plus AV mounts on engine deck protect the motor
- Quick engage/release twin claw coupling
- Shaft drive coupling interchangeable with Dynapac/Wacker/GCM/Altrad-Belle power units
- Flexshaft has armoured spirals both ends to protect the shaft
- Power options: Honda GX160, BTP200, Yanmar diesel L48, electric 230V & 110V
- Available with 6m and 12m shaft



### TECHNICAL INFO

MODEL	HEAD DIAM	LENGTH	HZ	FREQUENCY	AMPLITUDE	SHAFT	SHAFT DIAM	COUPLING
BTRP25	25mm	389mm	260	15600	0.72mm	6m	24mm	Twin claw
BTRP35	35mm	370mm	220	13200	0.82mm	6m	30mm	Twin claw
BTRP50	50mm	451mm	200	12000	1.15mm	6m	36mm	Twin claw
BTRP60	60mm	406mm	200	12000	1.20mm	6m	36mm	Twin claw
BTRP35/12	35mm	370mm	220	13200	0.82mm	12m	30mm	Twin claw
BTRP50/12	50mm	451mm	200	12000	1.15mm	12m	36mm	Twin claw
BTRP60/12	60mm	406mm	200	12000	1.20mm	12m	36mm	Twin claw

# BT CONCRETE VIBRATORS

## BT HUMDINGER ELECTRIC HAND HELD FLEX DRIVE CONCRETE VIBRATORS

- Powerful lightweight power unit with robust motor protection
- Flexible shafts from 1m to 6m
- Head diameters from 25mm to 58mm
- Double insulated 2.3kw motors, 115v & 230v
- Humdinger power unit and shafts available with Wacker or others coupling options for compatible fleet integration



### TECHNICAL INFO

MODEL	VOLTAGE	KW	HZ	MOTOR SPEED	WEIGHT
HVU110 Humdinger Electric Power Unit	115v	2,3	50/60	18000	5.5KG
HVU220 Humdinger Electric Power Unit	230v	2,3	50/60	18000	5.5KG

MODEL	HEAD DIAM	LENGTH	WEIGHT (KG)	FREQUENCY (HZ)	AMPLITUDE (MM)
HDV28/1	28 mm	1m	5.50	280	1.4
HDV28/2	28 mm	2m	6.10	280	1.4
HDV28/3	28 mm	3m	6.80	280	1.4
HDV28/6	28 mm	6m	9.40	280	1.4
HDV38/1	38 mm	1m	4.96	270	1.54
HDV38/2	38 mm	2m	6.26	270	1.54
HDV38/3	38 mm	3m	7.56	270	1.54
HDV38/4	38 mm	4m	8.86	270	1.54
HDV38/5	38 mm	5m	10.36	270	1.54
HDV38/6	38 mm	6m	11.86	270	1.54
HDV48/2	48 mm	2m	7.20	260	1.62
HDV48/3	48 mm	3m	8.90	260	1.62
HDV48/4	48 mm	4m	10.20	260	1.62
HDV48/5	48 mm	5m	11.70	260	1.62
HDV58/4	58 mm	4m	11.20	250	1.64
HDV58/5	58 mm	5m	12.50	250	1.64

# BT CONCRETE VIBRATORS

## BACKPACK CONCRETE VIBRATORS (FOR USE WITH HUMDINGER/HDV SHAFTS)

- Heavy duty lightweight frame: fully welded aluminum for extra strength
- 4-point fully adjustable harness
- Easy access control: swing control arm for easy RPM adjustment and access to emergency shut off switch
- Isolates vibration transfer to the operator
- Swivel base for improved maneuverability and reduced back strain
- Quick screw fitting for easy mounting of HDV flexshaft
- Advisable flexshaft length : 2 or 3 meter



### TECHNICAL INFO

MODEL	HDBP35H				
ENGINE	Honda GX35				
POWER	1.5 Hp				
WEIGHT	7.7 kg				
POKER HEAD	HEAD DIAM	LENGTH	WEIGHT (KG)	FREQUENCY (HZ)	AMPLITUDE (MM)
HDV38/2	38 mm	2m	6.26	270	1.54
HDV38/3	38 mm	3m	7.56	270	1.54
HDV48/2	48 mm	2m	7.20	260	1.62
HDV48/3	48 mm	3m	8.90	260	1.62

# BT CONCRETE VIBRATORS

## BT PNEUMATIC CONCRETE VIBRATORS

- High efficiency
- Range of 9 diameters of vibrator head to 28mm to 150mm
- Air hose lengths from 2m to 6m (standard stock 4m)
- In-line oil lubricator
- Maintenance-free rotors
- Components precision machined in the United Kingdom



### TECHNICAL INFO

MODEL	BTPV28	BTPV35	BTPV45	BTPV55	BTPV65	BTPV75	BTPV85	BTPV105	BTPV150
HEAD DIA MM	28	35	45	55	65	75	85	105	150
HEAD LENGTH MM	253	280	320	341	352	391	423	380	628
OVERALL LENGTH 2MTR/MM	2653	2640	2670	2700	2700	2740	2770	2740	3636
MAX POSSIBLE LENGHT MTR	6.0	10.0	12.0	12.0	12.0	12.0	12.0	12.0	-
WEIGHT KG 2MTR	5.5	6.0	7.5	9.0	11.0	16.5	18.0	23.0	35.0
CONSUMPTION LTR/MIN	504	608	736	820	1018	1218	1600	2100	2880
CONSUMPTION CFM	17.8	21.5	26.0	29.0	36.0	43.0	56.5	74.3	101.9
FREQUENCY RPM	18000	18000	17000	17000	18000	18000	17000	13500	10000
AMPLITUDE IN AIR MM	1.0	1.4	1.8	2.5	2.5	1.9	2.1	2.1	5.5
CENTRIFUGAL FORCE NEWTON	800	1924	3500	6050	9301	14851	27730	33309	32460
CENTRIFUGAL FORCE KG	81	196	357	617	948	1513	2826	3395	3308
WEIGHTED VIB READING	3.35	1.14	5.26	6.81	5.78	8.41	9.48	12.53	16.53
OUTPUT MAXIMUM M <sup>2</sup> /HR	3	10	16	25	28	32	42	55	100
RADIUS OF EFFECTIVENESS	14cms	20cms	25cms	38cms	44cms	40cms	55cms	65cms	95cms
S P LEVEL DB(A)	101.3	107.2	113	109	113	112.1	109	112.2	115

## BT PYTHON MK 2 HIGH FREQUENCY INVERTOR TYPE CONCRETE VIBRATORS

- Powerful easy to use motor in the head vibrator with simple robust invertor box for easy, trouble-free operation
- Plug into a 220v power source and it's ready to go
- 220v 50/60 Hz
- Body guard electronic cut out for operator safety



### TECHNICAL INFO

MODEL	DIAMETER	LENGTH	KG	CF (N)	AMPLITUDE	NOISE DB	HOSE	CABLE	INPUT VOLT 1 phase	OUTPUT VOLT 3 phase
BTHFE38	38mm	345mm	14,5	1600	2.7mm	70	5m	15m	220	215
BTHFE50	50mm	395mm	18,6	3900	2.9mm	71	5m	15m	220	215
BTHFE58	58mm	420mm	20,8	5700	3.0mm	71	5m	15m	220	215
BTHFE65	65mm	425mm	22,2	6500	3.2mm	72	5m	15m	220	215

# BT CONCRETE VIBRATORS

## BT HIGH FREQUENCY VIBRATOR CONVERTORS

FREQUENCY CONVERTORS ARE THE SAFE WAY TO USE HIGH FREQUENCY VIBRATORS AND THEY REDUCE INCOMING 3 PHASE OR SINGLE PHASE POWER AT THE VIBRATOR HEAD TO 42V/200HZ.

- Converter units mounted in protective steel frame
- Single and three phase power units
- Units driving 1, 2 and 4 vibrators



### TECHNICAL INFO

MODEL	CAPACITY	INPUT PH/HZ/V/A	OUTPUT	WEIGHT	QTY VIBS PER UNIT
BTFC200/11/1-D	1.1 KVA	1/50/220/2.8	3/200/48/11	27KG	1
BTFC200/18/2	1.8 KVA	3/50/380/2.8	3/200/48/22	37KG	2
BTFC200/25/2-D	2.5 KVA	1/50/220/2.8	3/200/48/25	37KG	2
BTFC200/45/4	4.5 KVA	3/50/380/8.3	3/200/48/54	78KG	4

MODEL	DIA	FREQUENCY	AMPLITUDE	HOSE	CABLE	POWER	AMPS	KN
BTHFC35/5	35mm	12000	1,8	5m	10m	42V/3-200hZ	8	1
BTHFC35/12	35mm	12000	1,8	12m	10m	42V/3-200hZ	8	1
BTHFC50/5	50mm	12000	2	5m	10m	42V/3-200hZ	11	2,6
BTHFC50/12	50mm	12000	2	12m	10m	42V/3-200hZ	11	2,6
BTHFC60/5	60mm	12000	2,2	5m	10m	42V/3-200hZ	16	2,2
BTHFC60/12	60mm	12000	2,2	12m	10m	42V/3-200hZ	16	2,2

# BT EMISSION CONTROL

## BT BLUECAT EMISSION CONTROL

WE CAN OFFER EMISSION CONTROL FOR 95% OF THE ENGINE TYPES OFFERED ON OUR EQUIPMENT



### EMISSIONS REDUCTION PERFORMANCE

Typical BlueCAT™ SSi Engines Emissions Reduction Performance



Carbon Monoxide (CO)



Hydrocarbons (HC)



Nitrogen Oxides (NOx)

# BT POWER



- The BTP200 6 HP petrol engine is a competitive option offered on all BT equipment. An economical alternative as a replacement engine for the Honda GX160 & G200.
- Fully CE certified and conforms to Tier V emission directives and the latest ROH directive.
- 12 month BT warranty.

# BT COMPACTION PLATES

## BT FORWARD PLATE COMPACTORS

- Enclosed frames for engine protection with hoist hook recess
- Cast aluminium throttle for durability and comfortable operator control
- Ductile iron base for strength and longevity
- Cast aluminium enclosed belt guard protects clutch from soil and sand ingress
- Models with integrated transport wheels
- Rubber mat options
- Water tank options

**BTPC60H**



**BTPC70H**



**BTPC95H**



## TECHNICAL INFO

MODEL	ENGINE	WEIGHT	PLATE SIZE	FREQ. VPM	CENTRIFUGAL FORCE	TRAVEL SPEED	GRADIENT CLIMB	WATER TANK	RUBBER MAT
<b>BTPC60H</b>	HONDA GX160, BTP200	65KG	500 X 360	6000	10,5kN	20-25m/min	35%	OPTION	NO
<b>BTPC70H</b>	HONDA GX160	70KG	546 X 420	6000	13kN	20-25m/min	35%	OPTION	NO
<b>BTPC95H</b>	HONDA GX160, BTP200	95KG	530 X 500	6000	15kN	20-25m/min	35%	YES	OPTION
<b>BTPC110Y</b>	YANMAR L48	110KG	525 X 500	6000	15kN	20-25m/min	35%	YES	OPTION



# BT COMPACTION PLATES

## BT REVERSIBLE PLATE COMPACTORS

- Enclosed frames for engine protection with hoist hook recess
- Cast aluminium throttle for durability and comfortable operator control
- Ductile iron base for strength and longevity
- Cast aluminium enclosed belt guard protects clutch from soil and sand ingress
- Hydraulic reversing mechanism with flexible manoeuvrability allows forward and backward and on the spot compaction
- Models with integrated transport wheels
- Rubber mat options
- Water tank options

**BTPC60RH**



**BTPC160H**



**BTPC240Y**



**BTPC405Y**



## TECHNICAL INFO

MODEL	ENGINE	WEIGHT	PLATE SIZE	FREQ. VPM	CENTRIFUGAL FORCE	TRAVEL SPEED	GRADIENT CLIMB	WATER TANK	RUBBER MAT
BTPC60RH	HONDA GX160, BTP200	80KG	480 X 350	6000	15kN	0-25m/min	35%	OPTION	NO
BTPC160H	HONDA GX200, BTP200	160KG	700 X 430	5400	27kN	0-25m/min	35%	OPTION	OPTION
BTPC160Y	YANMAR L70	180KG	700 X 430	5400	27kN	0-25m/min	35%	OPTION	OPTION
BTPC240Y	YANMAR L70	260KG	700 X 450	5200	35kN	0-23m/min	35%	NO	NO
BTPC350Y	YANMAR L100AE	350KG	860 X 485	4400	45kN	0-23m/min	35%	NO	NO
BTPC405Y	YANMAR L100AE	450KG	900 X 500	4400	50kN	0-23m/min	35%	NO	NO

# BT COMPACTION RAMMERS

## BT COMPACTION RAMMERS

- Engines all 4 stroke
- Durable cast aluminium throttle
- Large air cleaner on crankcase giving two stage cleaning, extending engine life
- Two stage full filter extending engine life
- Quality German-made polyurethane bellows 3 year guarantee
- Precision casting and machining of impact parts
- Large AV mounts isolating handle for operator comfort

**BTR60H**



**BTR76H**



**BTR78Y**



### TECHNICAL INFO

MODEL	ENGINE	WEIGHT	PLATE SIZE	JUMP	IMPACT	IMPACT (per min)
<b>BTR60H</b>	Honda GX100R	65KG	325 X 250mm	30-70mm	9,8kN	600-695
<b>BTR76H</b>	Honda GX120R	76KG	325 X 280mm	50-75mm	15,7kN	640-680
<b>BTR78Y</b>	Yanmar L48 Diesel	87KG	325 X 280mm	50-75mm	15,7kN	640-680

# BT COMPACTION ROLLER

## BT ROLLER



- Hydraulic-drive system consists of hydraulic pump and hydraulic motors providing variable working speed for travel, vibration is mechanical
- Dual smooth drums with beveled edges compact both asphalt and granular materials for job versatility
- Mechanical parking brake for safe operation
- Roller Brake Unit makes allows use on slope (less than 30%)
- Large rubber shock mounts absorb vibration and shock reducing wear and operator fatigue
- Electric starter with Diesel Engine
- Manual start in case of battery failure
- 60 Liter water tank with removable anti corrosive water sprinkler system, permits watering over the whole surface of the drum
- Unique CLUTCH/PUMP drive system provides easy cold weather starting and allows for no-load starting of engine
- Hinged motor cover

## TECHNICAL INFO

ENGINE TYPE	Yanmar L100AE
MAX. OUTPUT POWER	6,5kW (PS)
DIMENSION	2.550mm x 700mm x 1.250mm (L x W x H)
WEIGHT	920kg
ROLLER LENGTH	650mm
ROLLER DIAMETER	420mm
VIBRATION FREQUENCY	48-62Hz
CENTRIFUGAL FORCE	22,2 kN
MAX.TRAVELING SPEED	60m/min (Depending on materials)
LIMITED GRADIENT	40%
WATER TANK CAPACITY	60L
ADVANCE	Hydraulic
VIBRATION	Manual

# BT SITE LIGHTING

## BT LED LIGHTS

- LED flood light 300w
- 43,500 lumens
- Can be set up in series to illuminate a large area
- Strapped to columns or fixed to a tripod
- 230v & 110v options



## BT OVAL LIGHTS

- 1000w long life metal halide lamp
- 110,000 lumens
- Can be set up in series to illuminate a large area
- Strapped to columns or fixed to a tripod
- 230v & 110v options



# BT SITE LIGHTING

## MOBILE FLOOD LIGHT TOWER

### BT SOLAR LIGHT TOWER 4VS200

- IP65 LED lights.
- Galvanized mast, 359° rotating manually.
- Durable & efficient solar module.
- Deep cycle and maintenance-free lead-acid batteries.
- Retractable & adjustable supporting wheel tow bar.
- Four 5000lb individual stabilizing legs.
- 13"rim with regular tires.



### I9T1200

- 9M mast
- Kubota 2 cylinder engine
- Single phase outlet socket
- 4 x 320 w lamp
- Vertical telescopic mast with electric automatic raising and lowering
- 220 hours of autonomy
- 5 stabilisers

ALL BT LIGHT TOWERS ARE AVAILABLE IN LED, METAL HALIDE AND SOLAR/HYBRID OPTIONS







# BETON TROWEL

CONCRETE FINISHING  
& COMPACTION

**DEALER:**

## **BETON TROWEL**

tel. +32 (0)52 315 350

tel. +32 (0)52 315 351

fax +32 (0)52 315 359

info@betontrowel.com

www.betontrowel.com

Nijverheidsstraat 10

B-1840 Londerzeel - Belgium

